

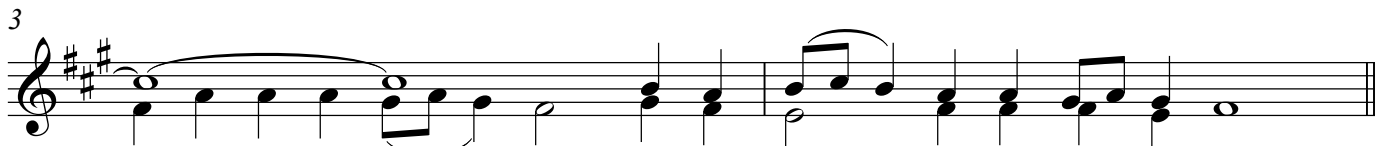
# ЕДИНРОДНЫЙ СЫНЪ П

Строго  $\text{♩} = 104$

муз. Сепфоры



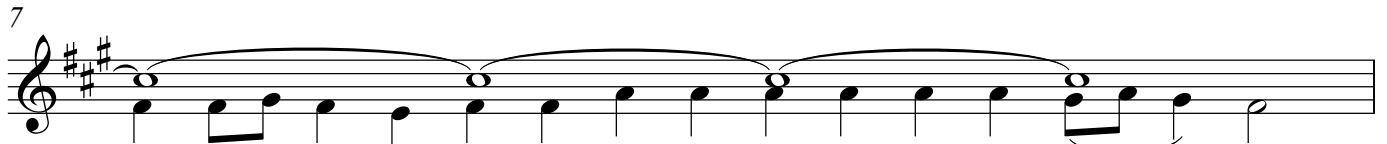
Сла - ва От - цу и Сы - ну и Свя - то - му Ду - ху,



и ны - не и прис - но и во ве - ки ве - ков. А минь.



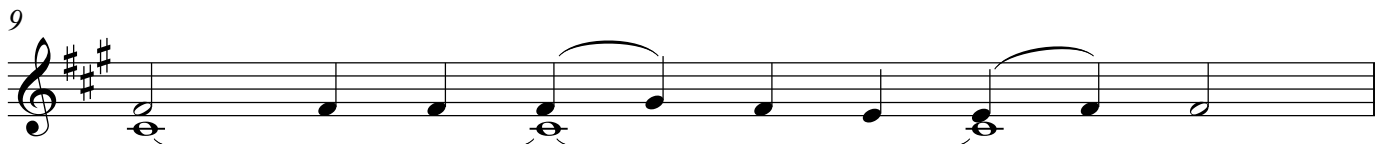
Е - ди - но - род - ный Сы - не и Сло - ве Бо - жий Без - смер - тен Сый,



и из - во - ли - вый спа - се - ни - я на - ше - го ра - ди



во - плю - ти - ти - ся от Свя - ты - я Бо - го - ро - ди цы

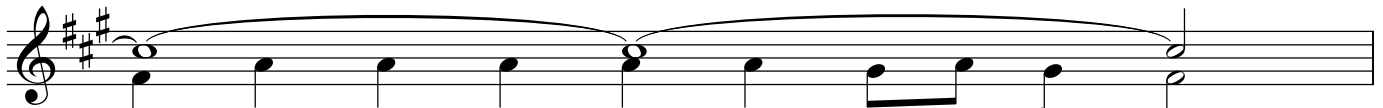


и Прис - но - де - вы Ма - ри - и,



не - пре - лож - но во - че - ло - ве - - - чи - вый - ся;

11



рас - пный - ся же Хрис - те Бо - - же,

Musical notation for line 11: Treble clef, key signature of three sharps (F#, C#, G#), 4/4 time signature. The melody consists of a half note G4, quarter notes A4, B4, C5, D5, E5, F#5, G#5, and a half note G#5. A slur covers the first four notes, and another slur covers the last four notes.


12



смер-ти - ю смерть по - пра-вый, е - дин сый Свя ты - я Трой - цы,

Musical notation for line 12: Treble clef, key signature of three sharps, 4/4 time signature. The melody consists of quarter notes G4, A4, B4, C5, D5, E5, F#5, G#5, quarter notes A4, B4, C5, D5, E5, F#5, G#5, and a half note G#5. A slur covers the first four notes, and another slur covers the last four notes.

13



спро - слав - ля - е - мый От - цу

Musical notation for line 13: Treble clef, key signature of three sharps, 4/4 time signature. The melody consists of quarter notes G4, A4, B4, C5, D5, E5, F#5, G#5, and a half note G#5. A slur covers the first four notes, and another slur covers the last four notes.

14



и Свя - то - му Ду - ху, спа - си нас.

Musical notation for line 14: Treble clef, key signature of three sharps, 4/4 time signature. The melody consists of quarter notes G4, A4, B4, C5, D5, E5, F#5, G#5, quarter notes A4, B4, C5, D5, E5, F#5, G#5, and a half note G#5. A slur covers the first four notes, and another slur covers the last four notes.